

Unveiling



# ZWCAD (II)

Explore its Free Add-On

Comprehensive E-book

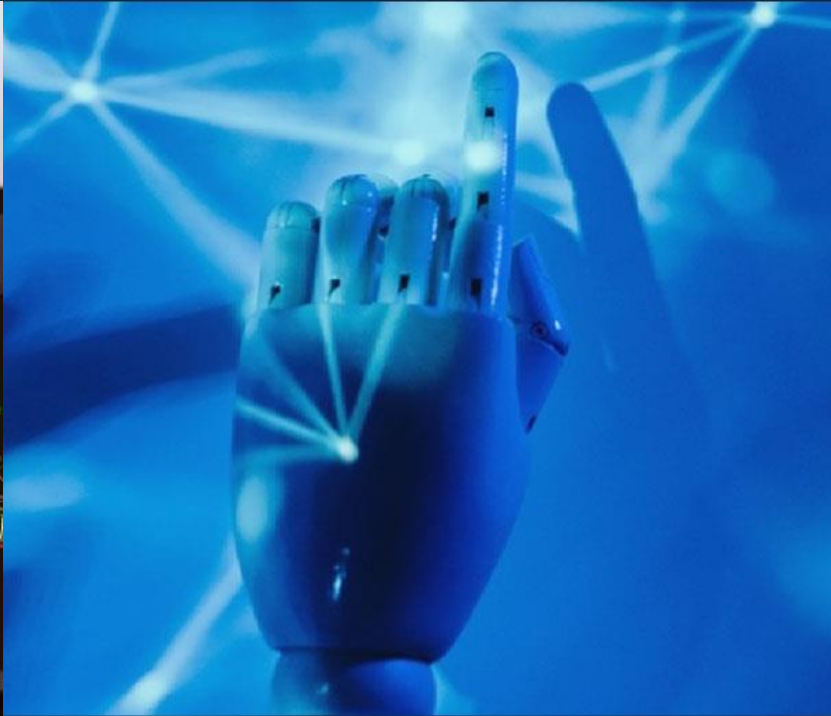
**ZW**SOFT

# User Experience



## User-Centric

User is the first priority, creating intuitive interfaces, tools, and features that enhance usability and productivity, ensuring a positive user experience.



## Innovation

Remain dedicated to innovation, continuously advancing its technology and software solutions to stay at the forefront of industry trends and meet evolving customer needs.



## Reliability

With a global presence and a strong network worldwide, ZWSOFT ensures accessibility, support, and collaboration opportunities for users across the globe.

# Preface

Welcome to " Unveiling ZWCAD (II) : Explore its Free Add-On." This book explores the remarkable advancements and practical applications of ZWCAD, a leading CAD software. Through facts, figures, personal experiences, and in-depth analysis, I aim to inspire designers and engineers by showcasing the immense potential of ZWCAD. Join me as we delve into the innovative features that will elevate the design experience and unlock new creative possibilities. Throughout this journey, we will discover exclusive functions that are not available with other CAD software, further emphasizing the distinctive advantages of ZWCAD. Let's embark on this exciting exploration together and uncover the unparalleled capabilities of ZWCAD.

**Written by Abu Hamzah, a senior ZWCAD user**

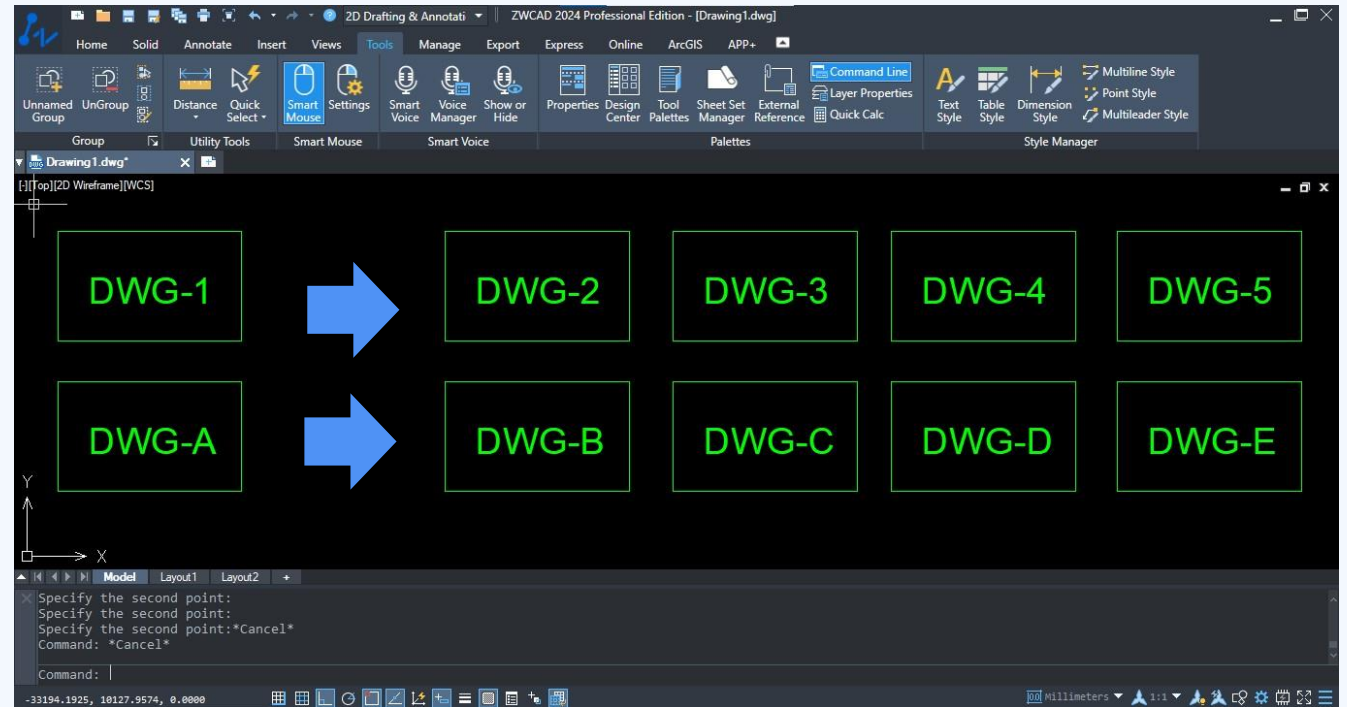
# CONTENT ARTICLES

<b>TEXT INCREMENT</b>	
"ZWCAD Add-On Text Increment Enhancing Efficiency and Functionality" .....	05
<b>BLOCK COUNT TABLE</b>	
"Efficient Block Count Table with Add-On: Streamlining Design Productivity" .....	09
<b>BLOCK BASE POINT CHANGE</b>	
"Simplifying Block Editing: Explore the Power of ZWCAD Add-On" .....	13
<b>LAYER JUMP</b>	
"ZWCAD Add-On Mastering Layer Jump Effortlessly Switching Layers" .....	17
<b>OBJECT COMPARE</b>	
"Unleash Design Confidence: ZWCAD's Cross Checking Powerful Add-On" .....	21
<b>BULK PURGE</b>	
"Boost Efficiency and Optimize CAD Performance with Bulk Purge Add-On" .....	25

# TEXT INCREMENT

"ZWCAD Add-On Text Increment Enhancing Efficiency and Functionality"

The revolutionary feature of text increment in ZWCAD with Add-On revolutionizes the way we update suffixes and prefixes of text in CAD drawings. By automating this process, it not only saves valuable time but also guarantees utmost accuracy. The beauty lies in its simplicity, as I can effortlessly set the desired number or letter increment. With the three versatile options of line, free hand, and polar, arranging my sheet title becomes a breeze. The free hand tool empowers me to effortlessly rearrange the suffixes and prefixes of my sheet title, ensuring a seamless workflow text increment with numbers and letters as shown in the below figure.

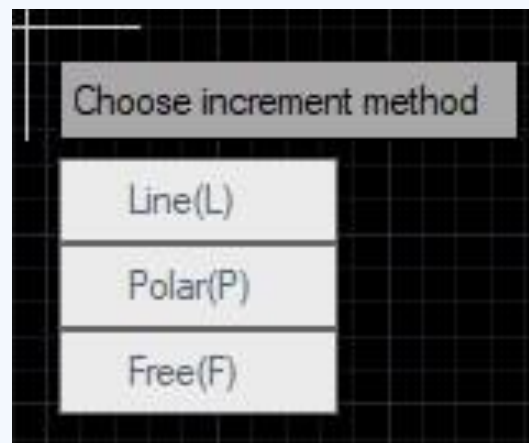
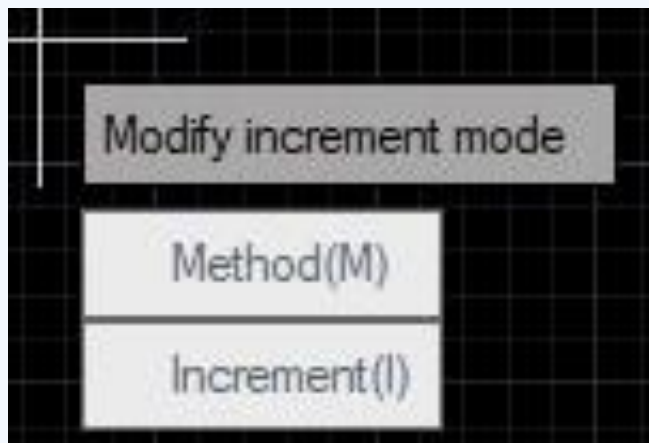


# Method to use ZWCAD Add-On Text Increment

*Here is the step by step method to use ZWCAD Add-on Text Increment:*

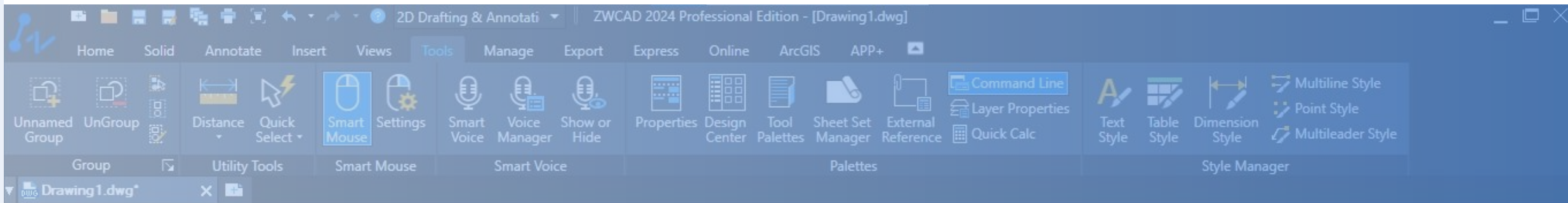
1. Apply the command 'TEXTADD'.
2. Select the text object that you want to increment.
3. Click on the specific letter or number.
4. Customize one out of three modes of operation 'as shown in the figure' Free, Line, or Polar by entering Mode 'O' and Method 'M'.
5. Specify the increment value for the number 1 2 3 4..... Or 2 4 6 8..... Or letter A B C D.
6. Click on the particular letter/number for the increment and click again over the screen to get the result and repeat the process.
7. The ZWCAD Add-On will automatically generate copies of the selected text with incremented values based on your specified settings.

*"Ortho mode should be turned off when applying the free mode text increment to place it in the desired location."*



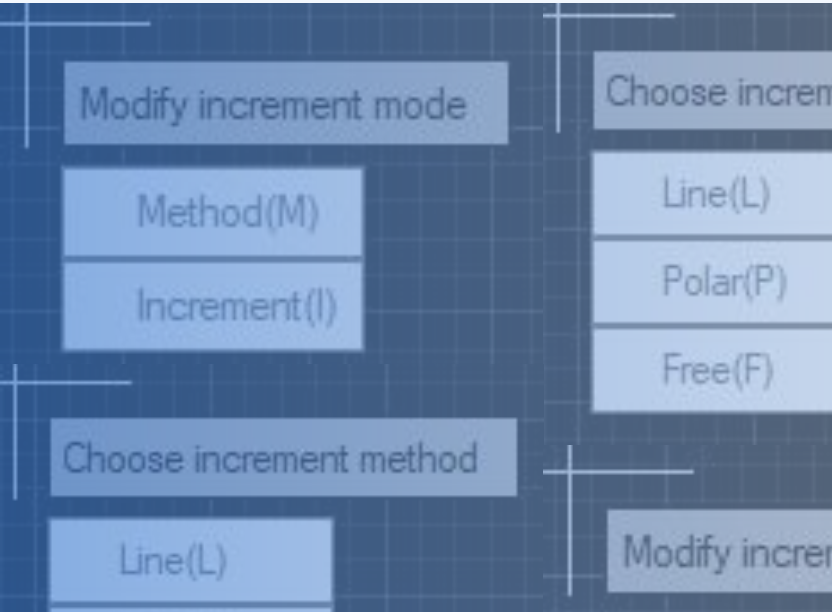
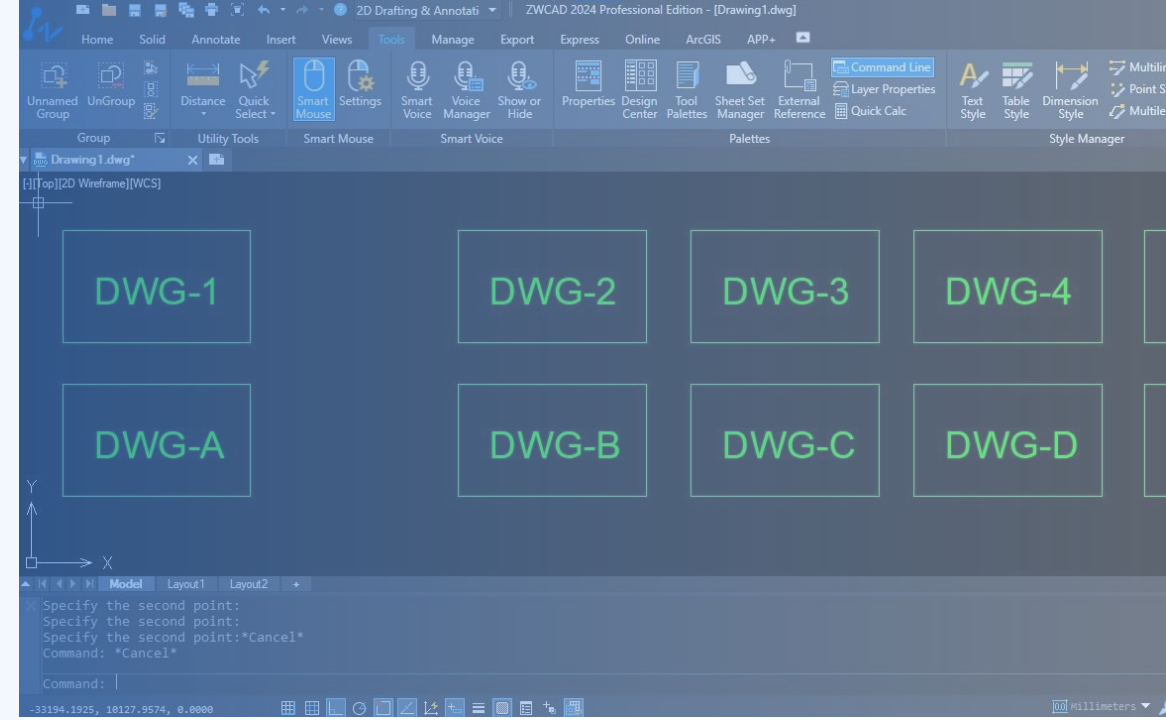
# Key Features

1. **Automation:** The ZWCAD Text Increment Add-On automates the sequence order of text, saving time and effort.
2. **Precision Control:** Users have precise control over increment values.
3. **Multi-option:** It allows three modes of operation - Free, Line, and Polar.
4. **Dual Increment:** It allows both numeric and alphabetical increments.



# Why ZWCAD Text Increment

The step increment determines the amount by which a number or letter increases when updating text suffixes or prefixes. It offers precise control and flexibility in managing numerical or alphabetical sequences, ensuring accuracy and efficiency in CAD drawings. In my case, it is much easier for me to place sheet titles with a step increment for the entire sheet layout.



## Where to use ZWCAD Text Increment

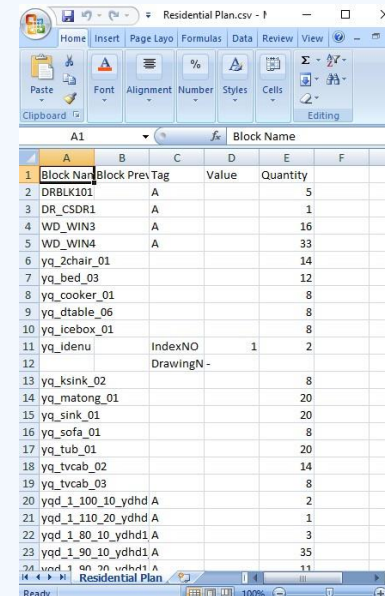
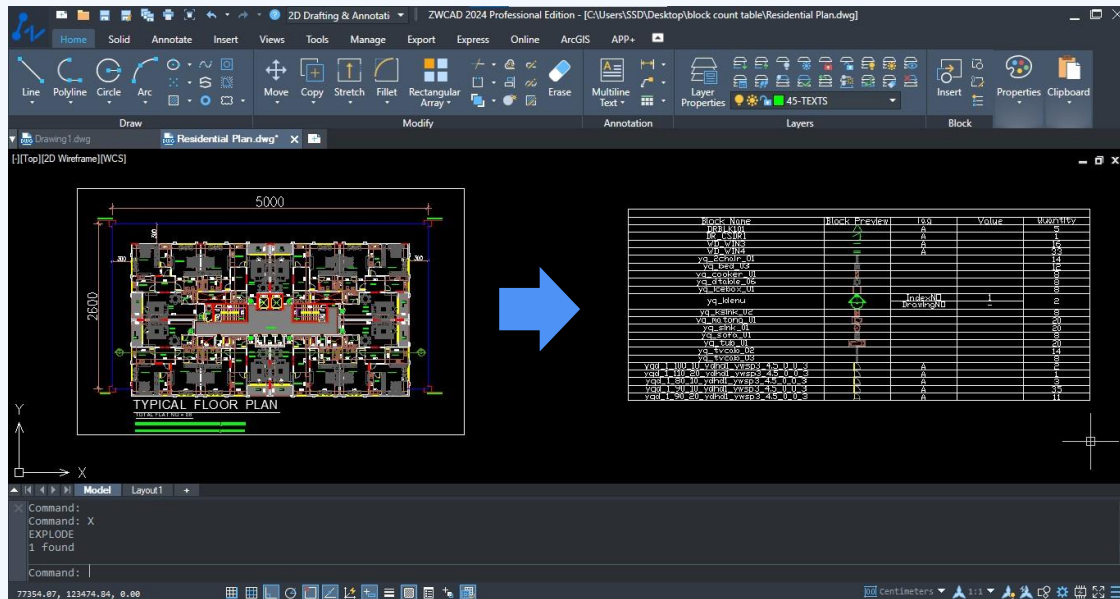
The step increment Add-On in ZWCAD is used to automate and control the updating of numerical and alphabetical sequences in CAD drawings, saving time and ensuring accuracy. It is particularly beneficial for managing text suffixes and prefixes in designing projects, whether it involves sheet layout title or any specific area of concern.

# BLOCK COUNT TABLE

"Efficient Block Count Table with Add-On: Streamlining Design Productivity"

Uncover the powerful capabilities of ZWCAD's Add-On Block Count Table and take your design efficiency to new heights. With the Block Count Table feature, you can now access and manage your blocks effortlessly across the entire drawing. Experience the convenience of generating block count reports in table or data CSV, Excel format, providing you with comprehensive quantities and serial numbers at a glance.

In my case, it comes with the benefit of collecting entire furniture blocks to count with serial numbers and quantities, along with a data sheet. Simplify your block management process and streamline your design workflow with ZWCAD's Block Count Table, saving time and enhancing productivity. Block count table with data sheet as shown below in both the figure.

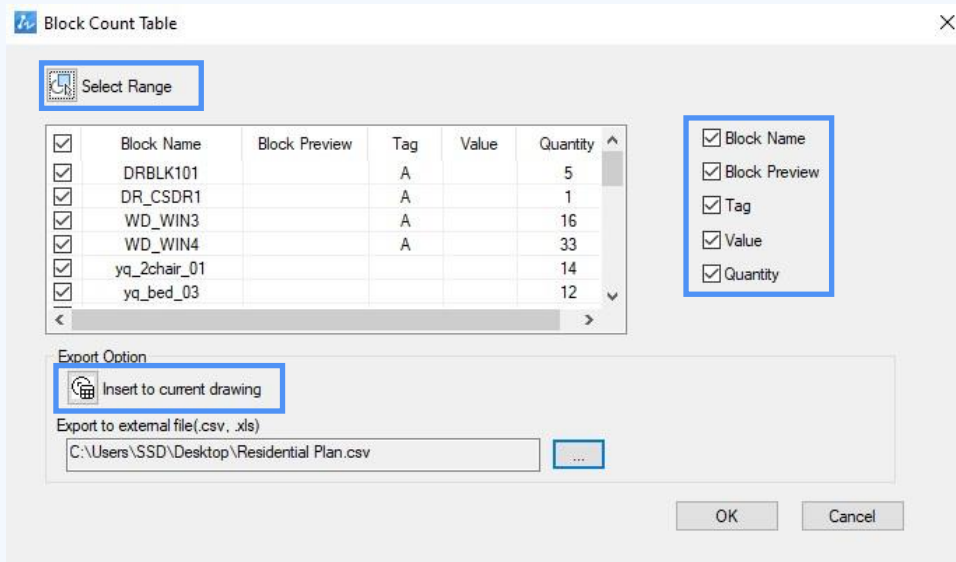


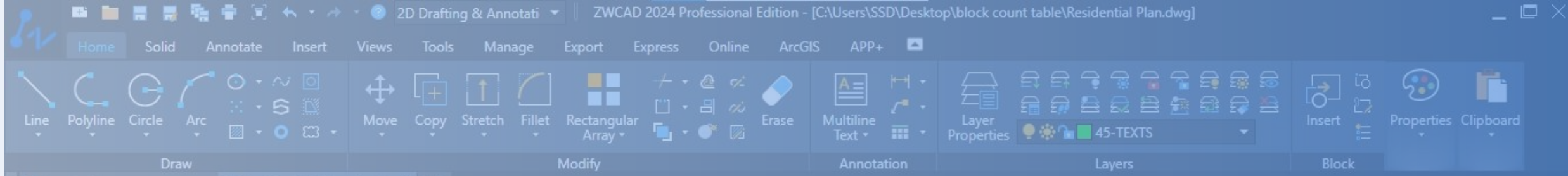
# Method to use ZWCAD Add-On Block Count Table

Here is the step by step method to use ZWCAD Add-on Block Count Table:

1. Apply the 'BCOUNTTABLE' command.
2. Click on the select range and select the required/entire block from the drawing to list out the block table 'as shown in the figure'.
3. Choose the desired output options from the dialog box, such as generating the table in the drawing or CVS, XLS file format.
4. If you choose to generate the table in the drawing, specify the insertion point for the Block Count Table.
5. Click the 'OK' button to generate the Block Count Table and insert it into the drawing, displaying the counts of the selected blocks.

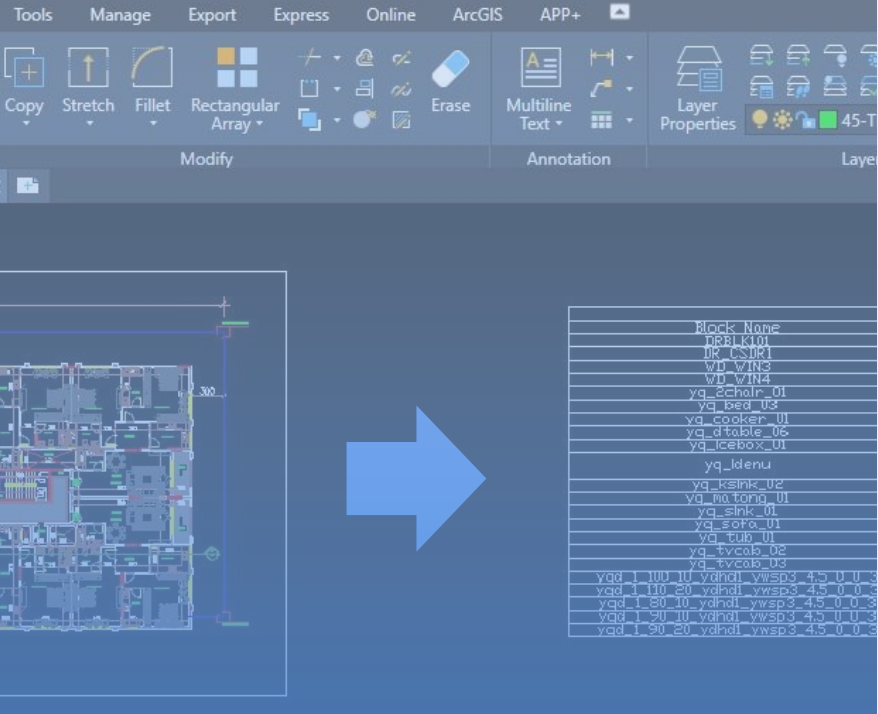
"You can customize the block count detail table from the setting."





## Key Features

1. **Block count in one time:** User can choose the entire drawing or a specific part of the drawing to calculate the quantity of blocks.
2. **Automated Counting:** Block count in the ZWCAD Add-On automates the process of counting blocks within a drawing.
3. **Accurate Quantity Determination:** It provides accurate and reliable information about the quantity of blocks used in a design.
4. **Comprehensive Documentation and Reporting:** Designers can generate detailed reports or tables of blocks with just a click.
5. **Effortless and Time-Saving:** The process of block counting with table saves time and effort without affecting the drawing.



## Why ZWCAD Block Count Table

Utilizing block count in design software like ZWCAD with an Add-On offers efficiency, accurate analysis, comprehensive documentation, streamlined management, optimized workflow, and compliance with design standards with the blocks existing in the drawing. It automates counting and provides smooth block detail with tables and Excel sheets at a glance.

## Where to use ZWCAD Block Count Table

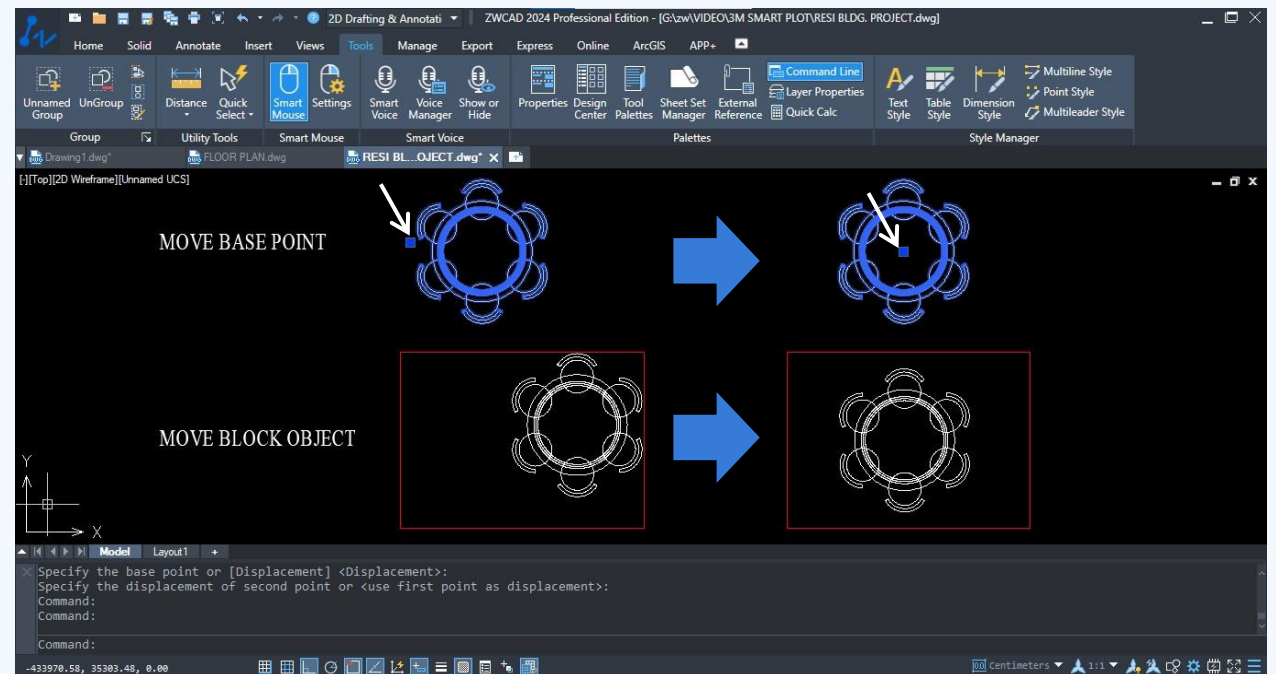
Block count is a valuable tool used in various design fields such as architecture, engineering, interior design, landscaping, civil engineering, and product design. It streamlines the process of counting blocks, enhances design analysis, aids in project planning, and simplifies block management for quotations and objects.

	A1	Block Name				
	A	B	C	D	E	F
1	Block Name	Block Prev	Tag	Value	Quantity	
2	DRBLK101		A		5	
3	DR_CSDR1		A		1	
4	WD_WIN3		A		16	
5	WD_WIN4		A		33	
6	yq_2chair_01				14	
7	yq_bed_03				12	
8	yq_cooker_01				8	
9	yq_dtable_06				8	
10	yq_icebox_01				8	
11	yq_idenu		IndexNO	1	2	
12			DrawingN	-		
13	yq_ksink_02				8	
14	yq_matong_01				20	

# BLOCK BASE POINT CHANGE

"Simplifying Block Editing: Explore the Power of ZWCAD Add-On"

Discover the game-changing potential of ZWCAD Add-On with the innovative Block Reference Point Modification feature, where you can effortlessly modify block references with a single click of the mouse. Efficiently modify and update block reference base points, reducing design complexities and maximizing productivity. With the ability to draw less and design more, ZWCAD empowers creative professionals to streamline their workflow, enabling seamless adjustments and enhancements to their designs. I found it particularly useful when I need to relocate blocks in multiple places, as I can simply switch the base point to proceed further. As you can see below the block move base point and move block object.

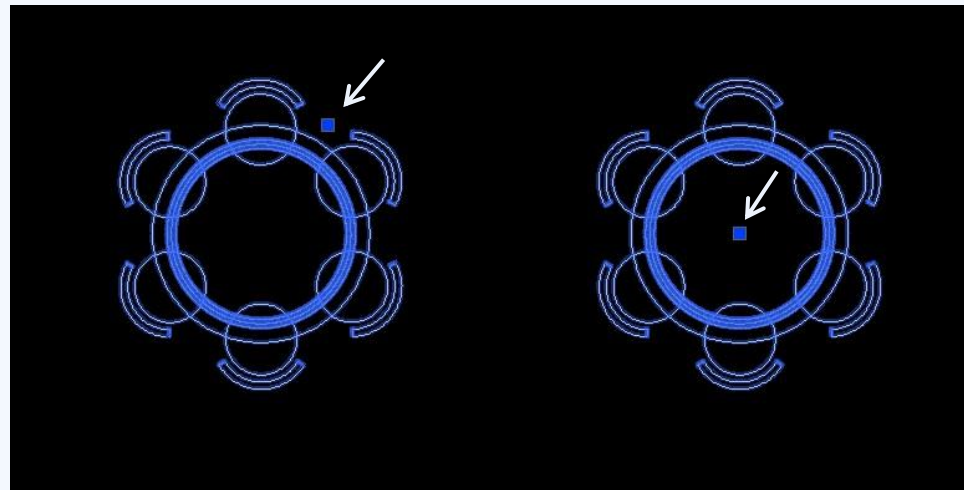
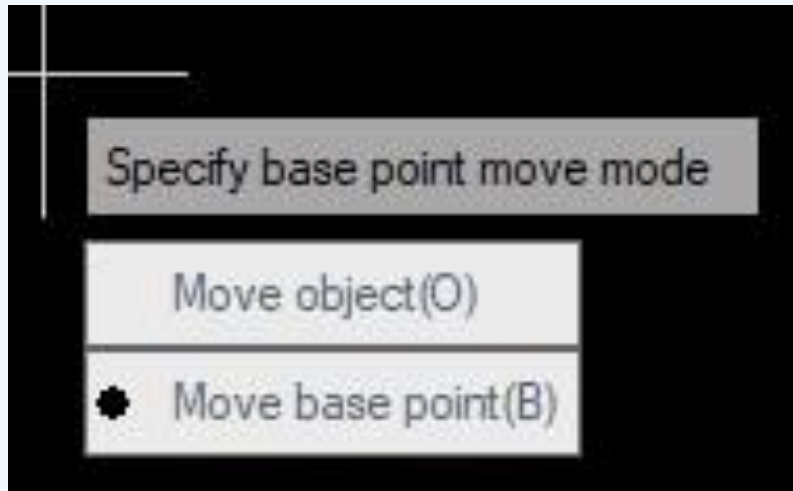


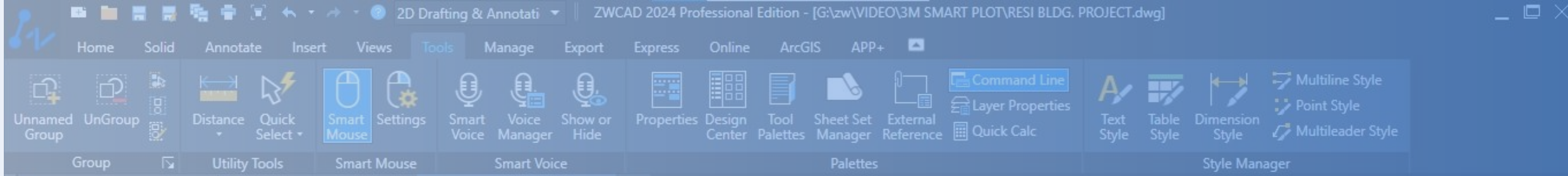
# Method to use ZWCAD Add-On Block Base Point Change;

*Here is the step by step method to use ZWCAD Add-On Block Base Point Change:*

1. Load the drawing file in ZWCAD that contains the block you want to modify.
2. Apply the 'CHANGEBASE' command.
3. Select the block by clicking on it or using the appropriate selection method.
4. Specify the new point.
5. Select the mode of operation: Move Object 'O' or Move Base Point 'B' 'as shown in the figure'.

*"You can choose between two options: Move Object or Move Base Point."*



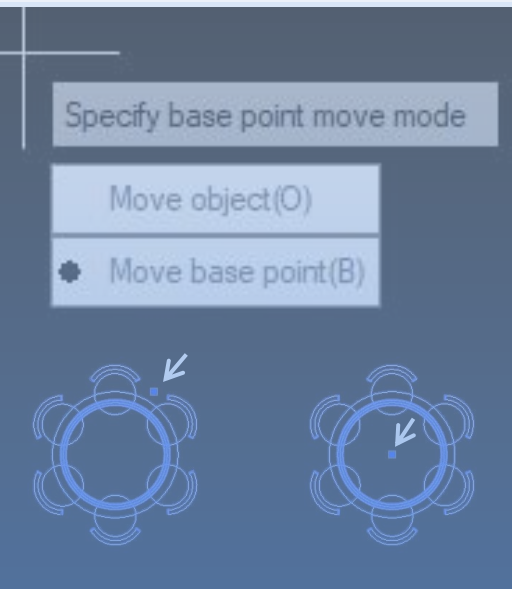
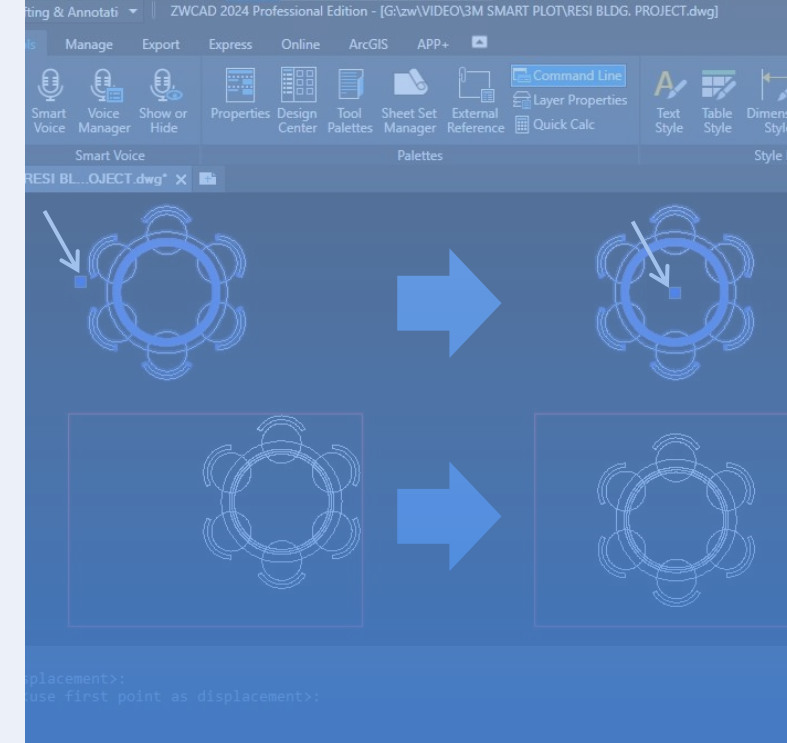


## Key Features

1. **Dual Mode:** Add-on allows the block to move either with the object or with the block base point.
2. **Effortless Block Reference Modification:** This feature enables quick and effortless modification of block reference base points.
3. **Streamlined Workflow and Design Efficiency:** By allowing users to draw less and focus more on designing, it streamlines the design workflow.
4. **Enhanced Efficiency:** The Block Base Change feature in the ZWCAD Add-On enhances efficiency.

# Why ZWCAD Block Base Point Change

ZWCAD's Block Base Point Change feature offers effortless block modification, streamlined workflow, improved precision, design flexibility, increased productivity, simplified design maintenance, and user-friendly functionality. These reasons make it a compelling choice for CAD professionals to choose block base point change smart method seeking a powerful and efficient design solution.



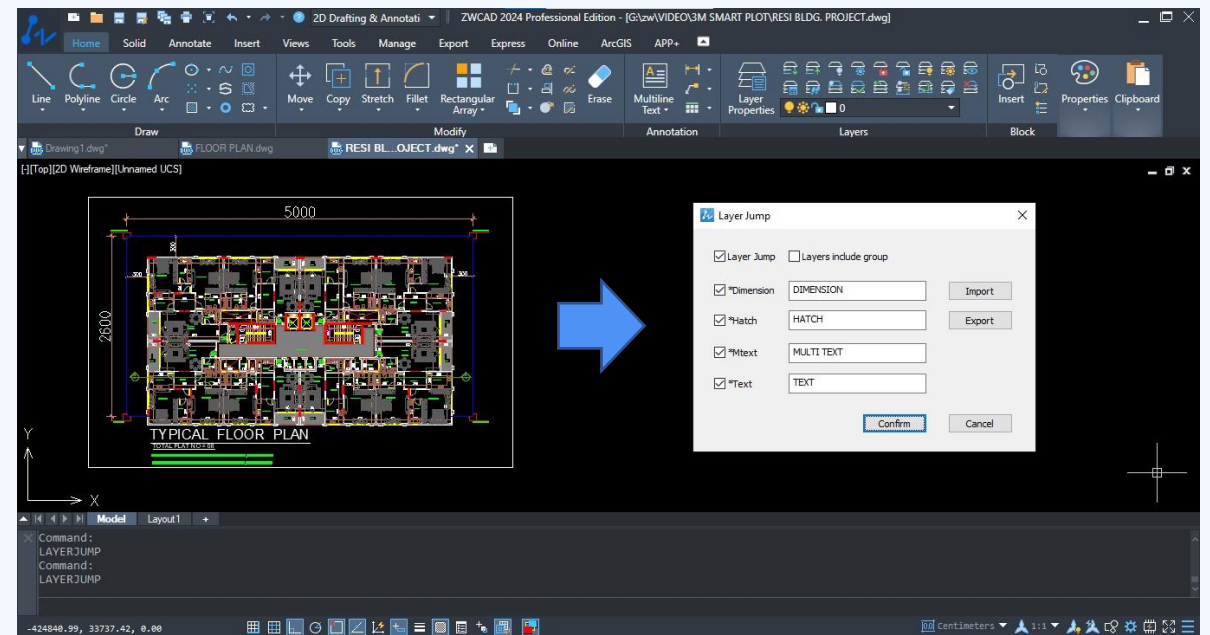
## Where to use ZWCAD Block Base Point Change

Block Base Point Change in ZWCAD is useful in various scenarios. It can be applied when modifying block reference base points to align objects accurately, adjust block orientations, or reposition blocks within a drawing. This feature simplifies design modifications and enhances overall precision and efficiency in the drawing.

# LAYER JUMP

"ZWCAD Add-On Mastering Layer Jump Effortlessly Switching Layers"

Look no further Introducing the extraordinary Layer Jump feature in ZWCAD with Add-On. Whether you're drawing lines, adding dimensions, or working with text and hatches, let me show you how this tool can save you time and effort. Say goodbye to tedious layer changes and hello to a smoother drawing experience. Layer Jump in ZWCAD and take your designs to new heights. Don't miss out on this game-changing feature that will revolutionize the way you work. In my case, the most preferable dimension layer and hatches required repeated switching, but not anymore with Add-On. Take a glance in the below figure, how I can switch smartly in my design process. For example I need to work on this floor plan with repeated dimension hatching text tools then I can simply setup layer jump as per my existing layer on time then simply can proceed with no switching layer every time.

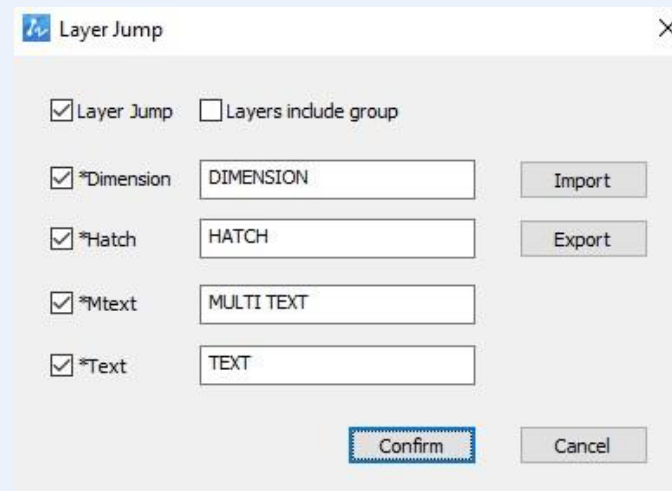


# Method to use ZWCAD Add-On Layer Jump

Here is the step by step method to use ZWCAD Add-on Layer Jump:

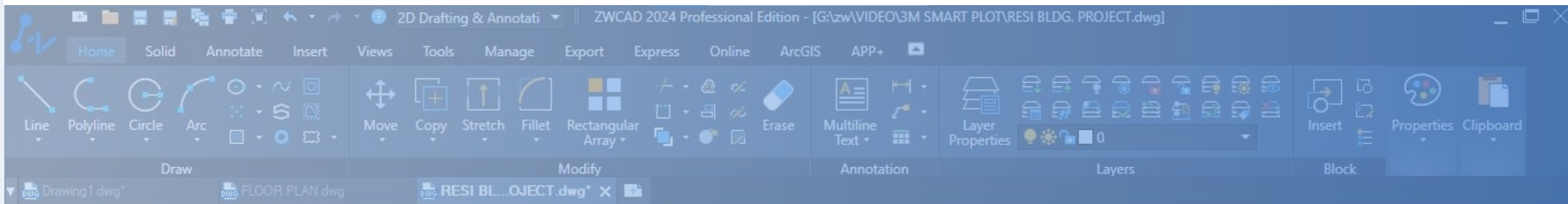
1. Open ZWCAD and load the desired drawing file.
2. Apply the command 'LAYERJUMP'.
3. Customize the settings in the dialog box. If you have set up layer groups, check the 'Layers include group' checkbox. Otherwise, ignore this step.
4. Choose the supported commands (Dimension, Hatch, Text, and M text).
5. Set the keyword for the layer you want to jump to. This keyword is crucial as it determines the target layer.
6. Export the jump layer or import the existing drawing layer from folder if available.
7. Click the 'Confirm' button to save your settings.

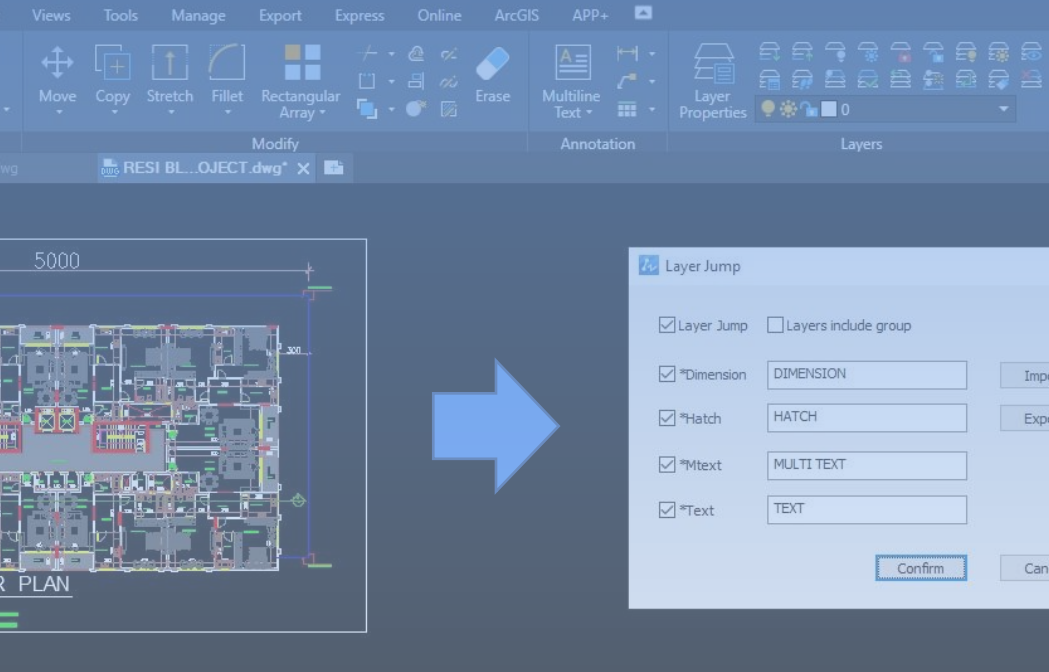
*"Layer jump name must be the same as shown in the figure existing layer."*



# Key Features

1. Seamless layer switching: Switch between layers effortlessly while executing these tools or command. (Dimensions, Hatches, Text, or M text)
2. Command-based activation: Layer Jump activates based on specific tool or command like dimensions, hatches, text, or M text.
3. Switch mode: Enable or disable the Layer Jump switching mode on/off.
4. One-time setup: Match existing layer name properly Layer Jump once and it will streamline the workflow rest of the time.
5. Jump back: After executing the tool or command, the layer will automatically switch the tool and back to the previous one after performed.



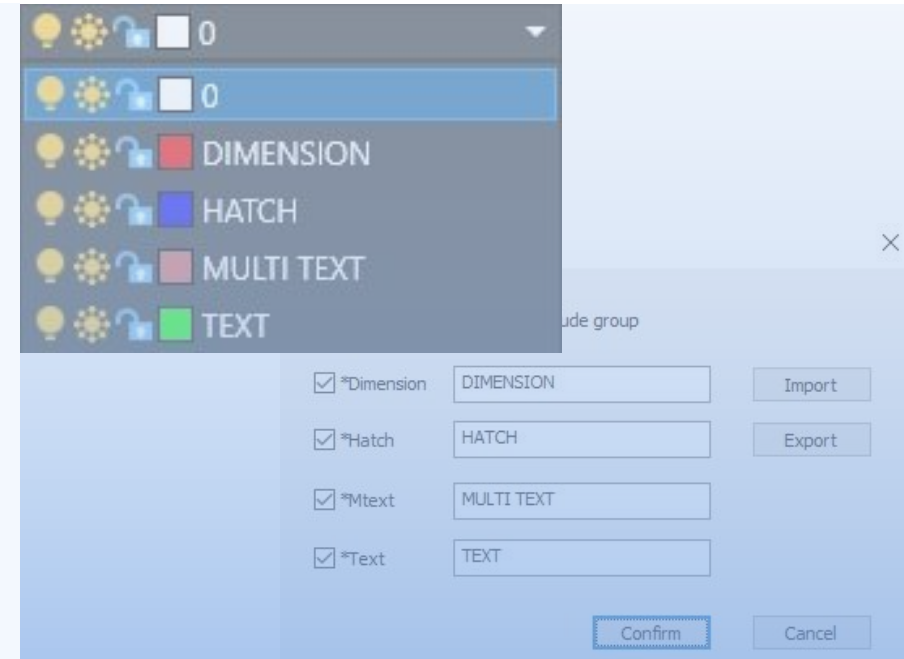


## Why ZWCAD Layer Jump

ZWCAD Layer Jump is the ultimate time-saving solution for effortless layer switching. There is no need to switch layers when applying dimensions, hatch, M text, or text. Whenever you use these tools, the layer will automatically switch and return to the current layer after the task is performed.

## Where to use ZWCAD Layer Jump

In the world of CAD design, time is of the essence, and a smooth workflow is key. Discover the game-changing Layer Jump feature in ZWCAD with the Add-On that revolutionizes the way you switch between drawing layers. Whether you're creating precise dimensions, adding vibrant hatches, or inserting impactful text, Layer Jump simplifies the process, saving you time and effort.

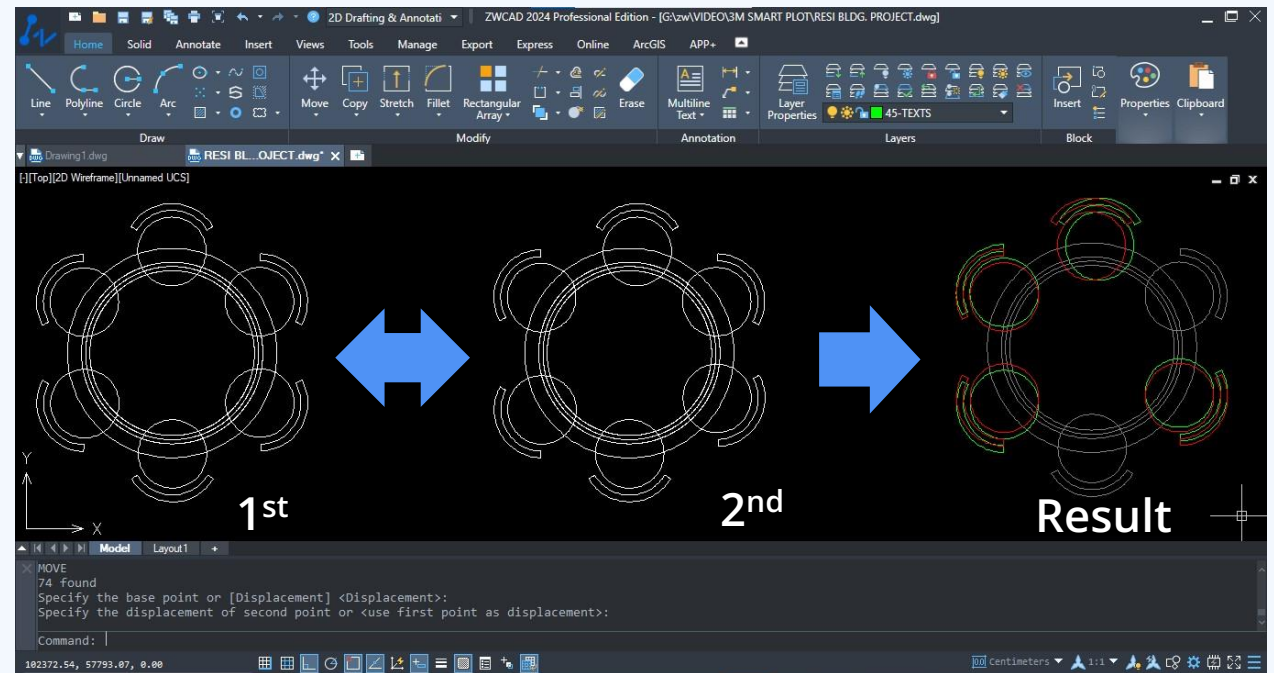


# OBJECT COMPARE

"Unleash Design Confidence: ZWCAD's Cross Checking Powerful Add-On"

As someone who frequently works with CAD design, I understand the importance of easily identifying changes made to drawings. With the Object Compare Add-On, tracking modifications becomes a breeze. Collaborate seamlessly, stay in sync with your team, and experience a new level of efficiency. The reason I find it useful is that it allows me to be confident with the drawing, as I can identify the changes made by involved team members directly on the actual drawing. This is the best possible way to protect and address the changes made by third parties.

As you can see below figure two objects 1<sup>st</sup> and 2<sup>nd</sup> not in same shape and the result identify the difference from both the objects, this become possible just because of object compare tool.

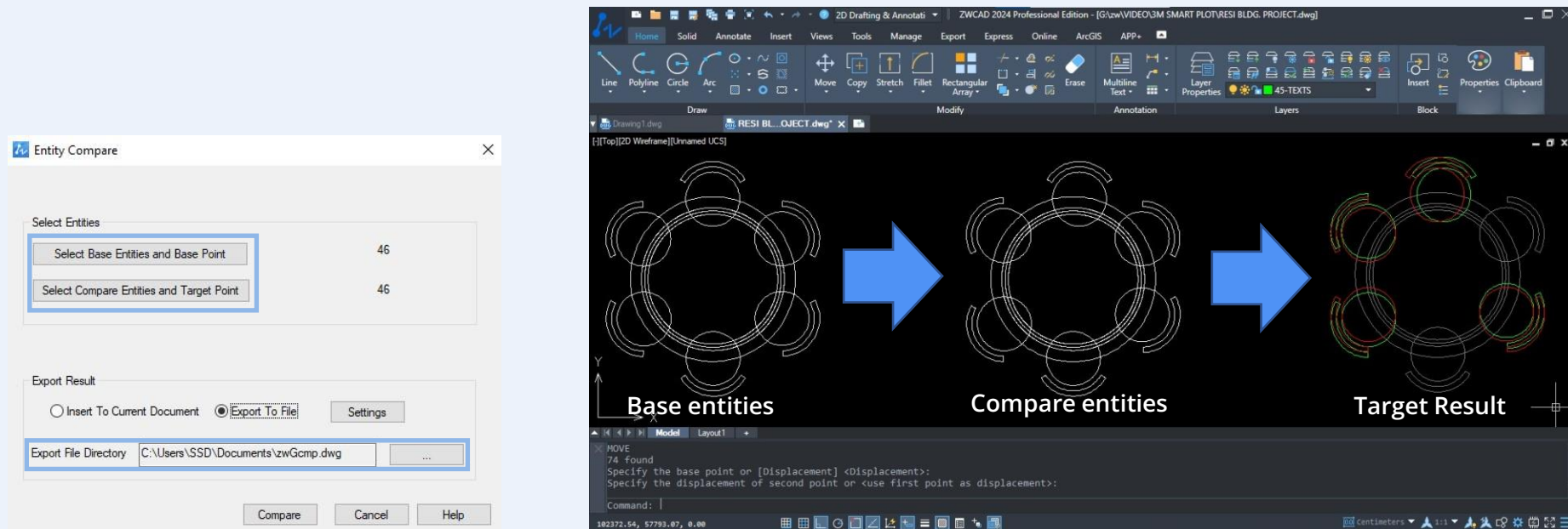


# Method to use ZWCAD Add-On Object Compare

Here is the step by step method to use ZWCAD Add-on Object Compare:

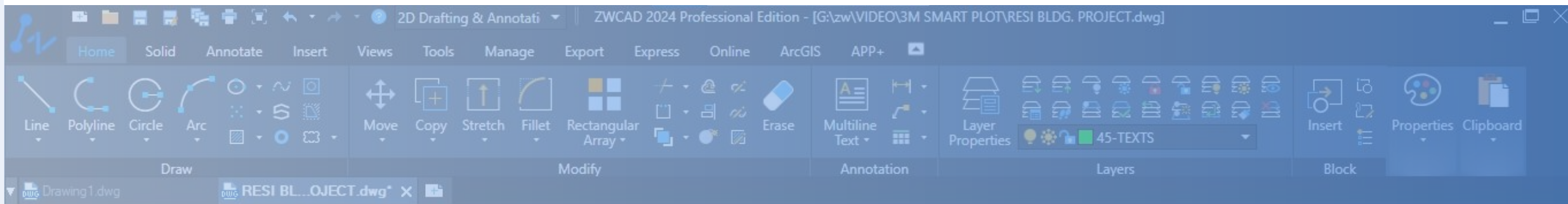
1. Apply the command 'GCMP'.
2. Select the base entities and base point 'as shown in the figure' and compare them with the target point.
3. Locate the exported result to view the changes that have been made.
4. Customize the export result by two option 'insert to current document' or 'export to file' DWG file separately.
5. Click 'Compare'.

*"To save as separate compared DWG locate export file directory from setting."*



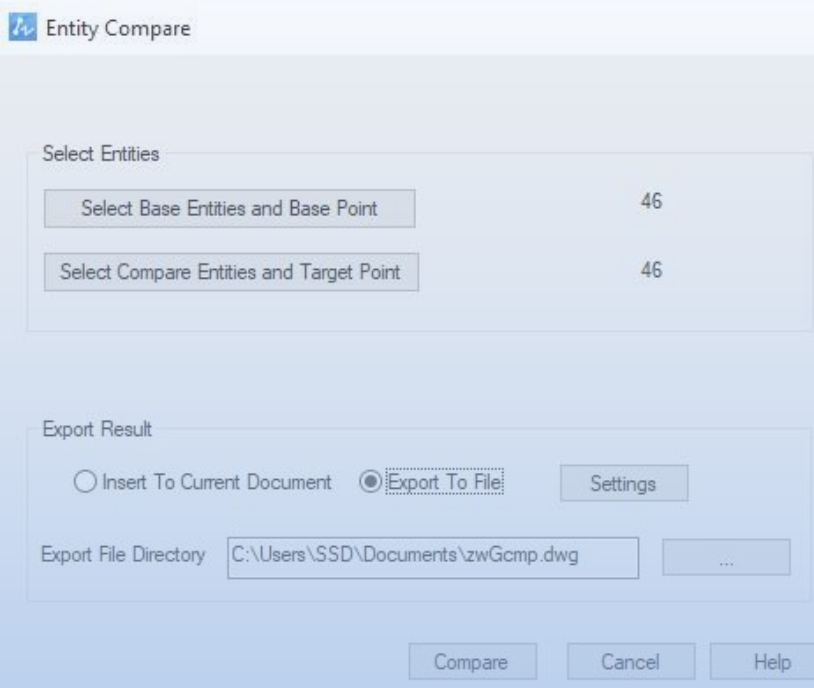
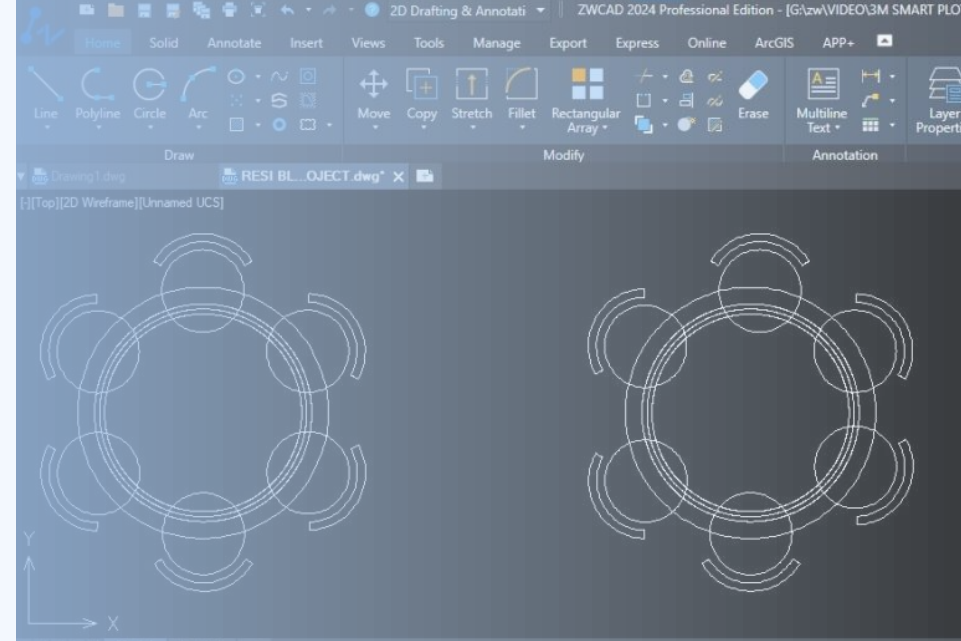
# Key Features

1. **Effortless Comparison:** Object Compare Add-On simplifies the process of comparing drawings, enabling you to easily track & identify changes.
2. **Confidential:** It allows users to cross-check the drawing for informed changes between the existing and revised drawings.
3. **Visual Highlighting:** The Add-On utilizes intuitive highlighting to visually represent modifications, making it easy to identify altered elements.
4. **Time Savings:** The automated comparison process saves valuable time, eliminating the need for manual line-by-line comparisons.
5. **Accurate Revision Control:** Maintain a comprehensive history of drawing revisions.



# Why ZWCAD Object Compare

Choose the ZWCAD Object Compare Add-On for effortless drawing comparison. Streamline collaboration, save time, and ensure accurate communication with intuitive highlighting and simplified version control. Be confident about the changes made in your drawing.



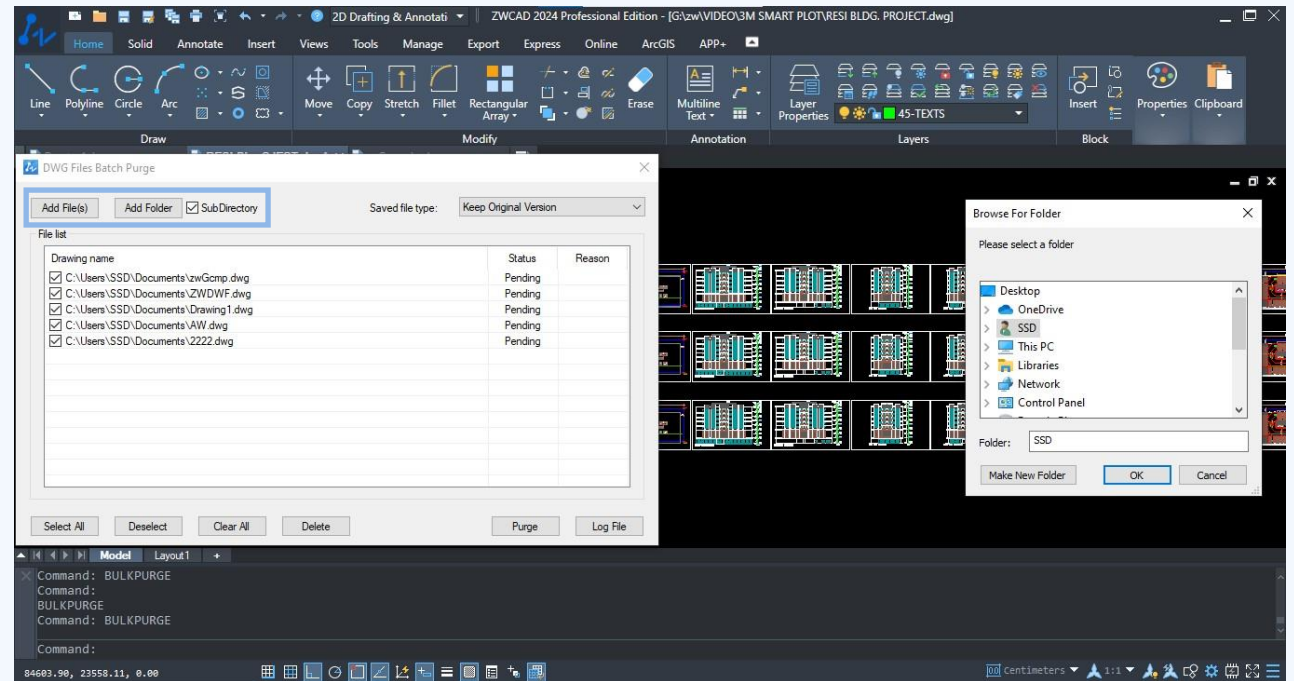
## Why ZWCAD Object Compare

Throughout your drawing work, let me provide an example: when I send the drawing to a team member for making changes in the building floor plan. After the final revision, I can smoothly compare my approved drawing with the most recent one. This streamlines collaboration, ensures accuracy, and allows for effortless tracking of modifications.

# BULK PURGE

“Boost Efficiency and Optimize CAD Performance with Bulk Purge Add-On”

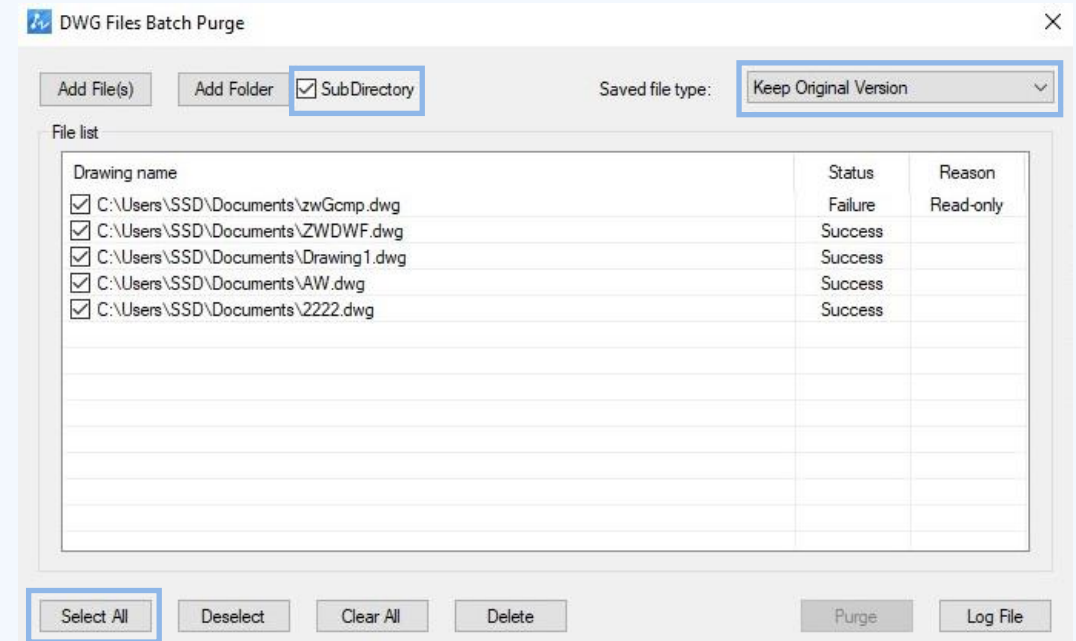
Bulk Purge is a powerful Add-On tool for ZWCAD that streamlines the process of purging unused objects in multiple drawing files. Built upon the foundation of the native “Purge” command, this enhanced tool provides users with a more efficient and comprehensive approach to eliminating redundant elements. Overall, Bulk Purge is an indispensable tool for ZWCAD users who work with multiple drawing files and seek to optimize their workflow. By simplifying the purging process and delivering efficient results, it empowers users to focus on their design tasks while maintaining clean and optimized drawing files. As you can see below dialog box allow me to purge entire folder or add dwg files to purge at a time.



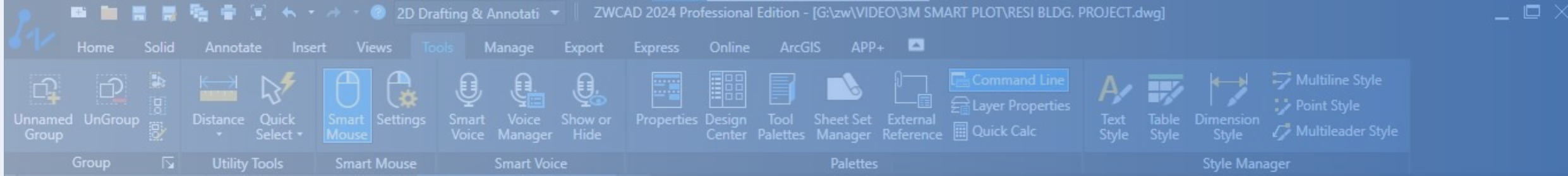
# Method to use ZWCAD Add-On Bulk Purge

Here is the step by step method to use ZWCAD Add-on Bulk Purge:

1. Apply the command 'BULKPURGE'.
2. Add drawing files or add folder from the dialog box 'as shown in the figure'.
3. Check box the sub directory to locate the purge results if required.
4. Click on 'Select All' and then purge & the status will show purge success.

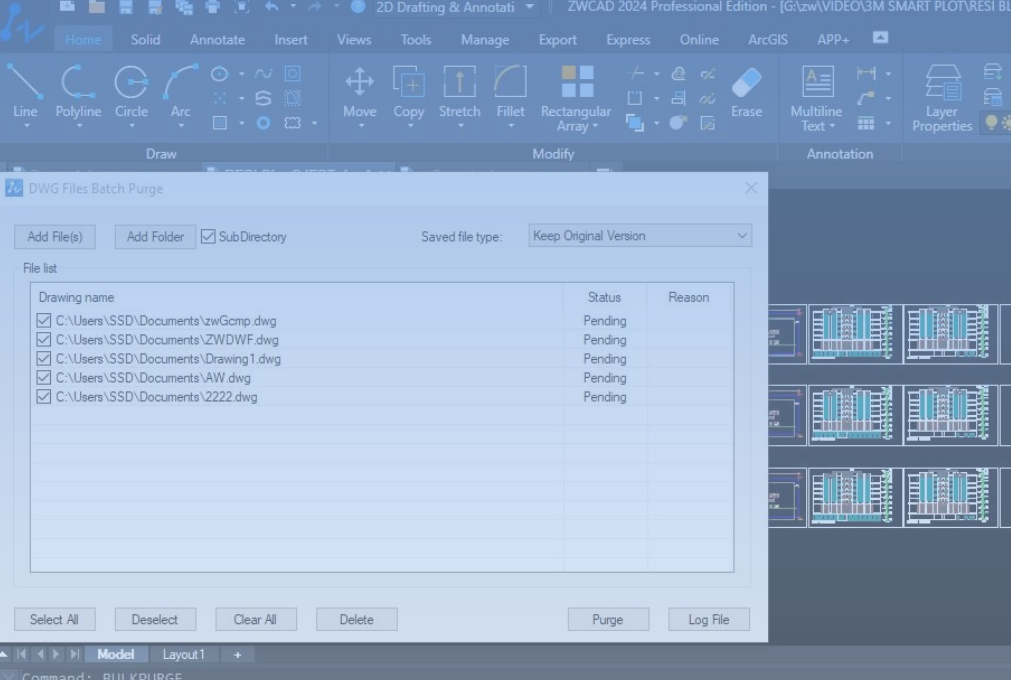


*"You can save the file type in the original version or choose a lower version of the drawing."*



## Key Features

1. **Multi-file purging:** It simultaneously removes unused objects from multiple drawing files.
2. **Seamless integration:** The intuitive interface and controls are integrated with ZWCAD for a smooth user experience.
3. **Performance optimization:** It improves drawing performance by eliminating unused objects, resulting in better efficiency.
4. **Enhanced drawing quality:** It helps maintain a clean and organized drawing environment, ensuring a high-quality output.
5. **Switch version:** Allows users to optimize CAD drawing files by purging either the newer/older or the original version.

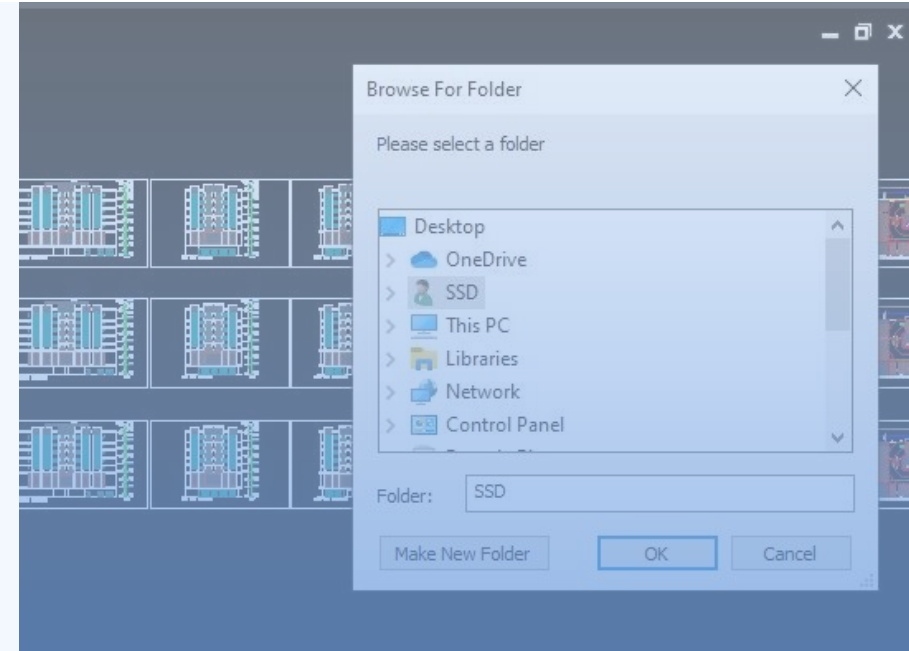


## Why ZWCAD Bulk Purge

Bulk purge eliminates the need for manual purging, saving valuable time. Improved drawing quality: By removing unused objects, it helps maintain a clean and organized drawing environment. Streamlined workflows: Its user-friendly interface and intuitive controls simplify the cleanup process.

## Where to use ZWCAD Bulk Purge

Bulk Purge is a versatile Add-On that can be used in ZWCAD to clean up drawing files by removing unused objects. It is beneficial for large-scale projects, collaboration, file sharing, archiving, project handover, and routine maintenance. It optimizes performance and helps maintain a clean drawing environment.



# THANK YOU!

Through this e-book, we have gained knowledge about the free add-on platforms of ZWCAD. It's time to immerse yourself in the world of ZWCAD, where the design process becomes seamless, and efficiency is greatly enhanced.

[Download Free add-on](#)

[DOWNLOAD ZWCAD](#)

[CONTACT US](#)



## About ZWSOFT:

ZWSOFT has been delivering reliable all-in-one CAx solutions since 1998. With over 20 years of experience, our products has been chosen and trusted by over 1.4 million customers in more than 90 countries worldwide.